

# NURSING PROGRAM MAP

## DIPLOMA IN NURSING (LPN)



Licensed practical nurses in the state of Iowa can expect solid wages and rapid job growth, and nursing is considered a Bright Outlook occupation by O\*NET. See an advisor to learn more.

### ► PREREQUISITES *(May not take more than twice.)*

New student orientation		Attend program conference prior to registration		Obtain CNA or HSP		TOEFL or HSC-160 (International students)		State License Decision**		Register		See advisor HSC-189 Orientation		Submit program conference sheet		Register		Laptop & scrubs		Background check & compliance package	
<b>TERM 1</b>											<b>TERM 2</b>										
BIO-151 NUTRITION				3								PSY-121 DEVELOPMENTAL PSYCHOLOGY				3					
PSY-111 INTRODUCTION TO PSYCHOLOGY				3								◆ BIO-173 HUMAN A&P II W/ LAB				4					
ENG-105 COMPOSITION I *				3								◆ HSC-189 INTRODUCTION TO NURSING				4					
◆ BIO-168 HUMAN A&P I W/ LAB				4								<b>TOTAL CREDITS</b>				<b>11</b>					
<b>TOTAL CREDITS</b>				<b>13</b>																	

### ► TECHNICAL PROGRAM *(Required admission GPA: 2.75. Program slots are limited and competitive.)*

FAFSA		PNN-228 Orientation		Register		Apply for graduation		LPN boards	
<b>TERM 1</b>					<b>TERM 2</b>				
◆ PNN-228 FOUNDATIONS I				6		◆ PNN-229 FOUNDATIONS II		4	
◆ PNN-721 FOUNDATIONS I CLINICAL				2		◆ PNN-723 FOUNDATIONS II CLINICAL		2	
◆ PNN-293 HEALTH ASSESSMENT				3		◆ PNN-446 CARE OF THE GROWING FAMILY		4	
◆ PNN-280 PHARMACOLOGY I				2		◆ PNN-282 PHARMACOLOGY II		2	
<b>TOTAL CREDITS</b>				<b>13</b>		<b>TOTAL CREDITS</b>		<b>12</b>	

◆ = "Critical Courses" require minimum B- grade. GPA of 2.75 in prereqs with minimum C grade in each course. May take each prerequisite course only twice.  
Prereqs for HSC-189 are ENG-105, A&P I, CNA or HSP, and program conference.

**\*Math placement - one of the following is required:**

- ALEKS algebra score ≥ 30
- College-level math course equivalency
- ACT math score of ≥ 19
- Earned A.A. or bachelors degree

**\*\*State License Decision:**

If you are planning to work outside of the state of Iowa, please meet with the Dean of Nursing, to make sure you are familiar with Nursing licensure requirements of that particular state.

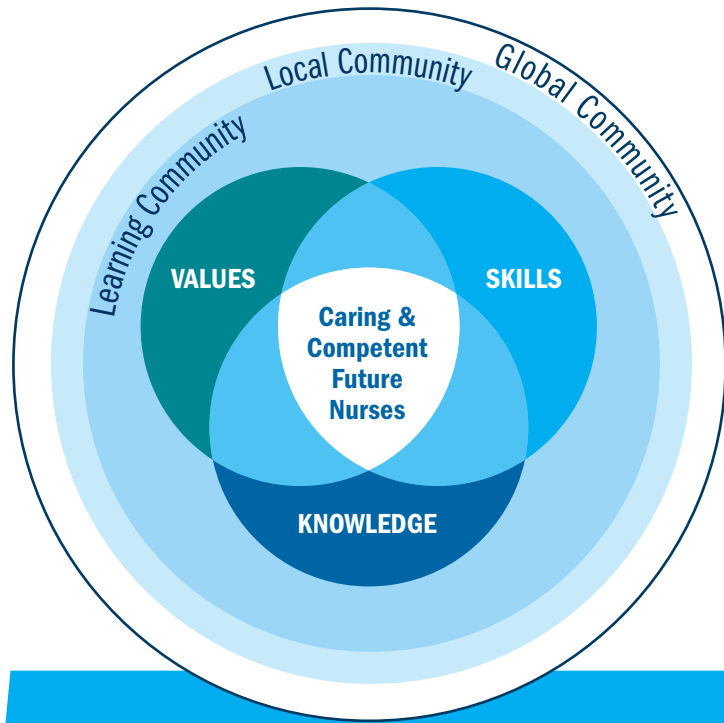


Plan your suggested schedule of courses with MyHub.

[www.kirkwood.edu/myhub](http://www.kirkwood.edu/myhub)

Plan of Study

\* Required before enrolling in HSC-189.



**Patient centered Care, Teamwork and Collaboration,  
Evidence based Practice, Quality Improvement,  
Safety, Informatics**

*Institute of Medicine, Quality and Safety Education for Nurses*

---

### **KIRKWOOD NURSING DEPARTMENT MISSION**

Guiding, advising, and educating caring, competent nurses for the future!

-----

### **KIRKWOOD NURSING PROGRAM OUTCOMES**

The Kirkwood Nursing program graduate will achieve the following competencies:

- Patient-centered Care
  - Teamwork
  - Evidence-based Practice
  - Quality Improvement
  - Safety
  - Informatics
  - Leadership
  - Professionalism
-